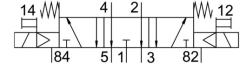
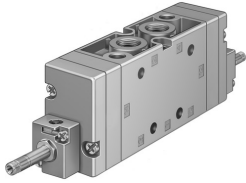


# Air solenoid valve MFH-5/3E-3/8-B

Part number: 19708

FESTO



## Data sheet

Feature	Value
Valve function	5/3, exhausted
Actuation type	Electrical
Width	40 mm
Standard nominal flow rate	2200 l/min
Pneumatic working port	G3/8
Operating pressure	0.3 MPa ... 1 MPa
Operating pressure	3 bar ... 10 bar
Structural design	Piston gate valve
Reset method	Mechanical spring
Nominal width	12 mm
Width dimension	41 mm
Type code	MFH
Exhaust air function	With flow control option
Sealing principle	Soft
Mounting position	Any
Manual override	Non-detenting
Type of control	Pilot-controlled
Pilot air supply port	Internal
Flow direction	Non-reversible
Symbol	00991036
Lap	Overlap
Max. switching frequency	3 Hz
Switching time off	114 ms
On switching time	26 ms
Changeover time	83 ms
Max. positive test pulse with 0 signal	2200 µs
Max. negative test pulse on 1 signal	3700 µs
Operating medium	Compressed air as per ISO 8573-1:2010 [7:4:4]
Information on operating and pilot media	Operation with oil lubrication possible (required for further use)
Corrosion resistance class (CRC)	1 - Low corrosion stress
Storage temperature	-40 °C ... 60 °C
Temperature of medium	-10 °C ... 60 °C
Ambient temperature	-5 °C ... 40 °C
Product weight	780 g
Electrical connection	Via F coil, to be ordered separately

Feature	Value
Type of mounting	Optionally: On PR rail With through-hole
Pilot exhaust air port 82	M5
Pilot exhaust air port 84	M5
Pneumatic connection 1	G3/8
Pneumatic connection 2	G3/8
Pneumatic connection 3	G3/8
Pneumatic connection 4	G3/8
Pneumatic connection 5	G3/8
Note on materials	RoHS-compliant
Seals material	NBR
Housing material	Die-cast aluminum